



Matthew James

St James House | St James Road | Surbiton | Surrey KT6 4QH

T: +44 (0) 20 8390 2266

E: enquiries@matthewjamesestateagents.co.uk

www.matthewjamesestateagents.co.uk



Ditton Hill Road, Surbiton, KT6 5JB

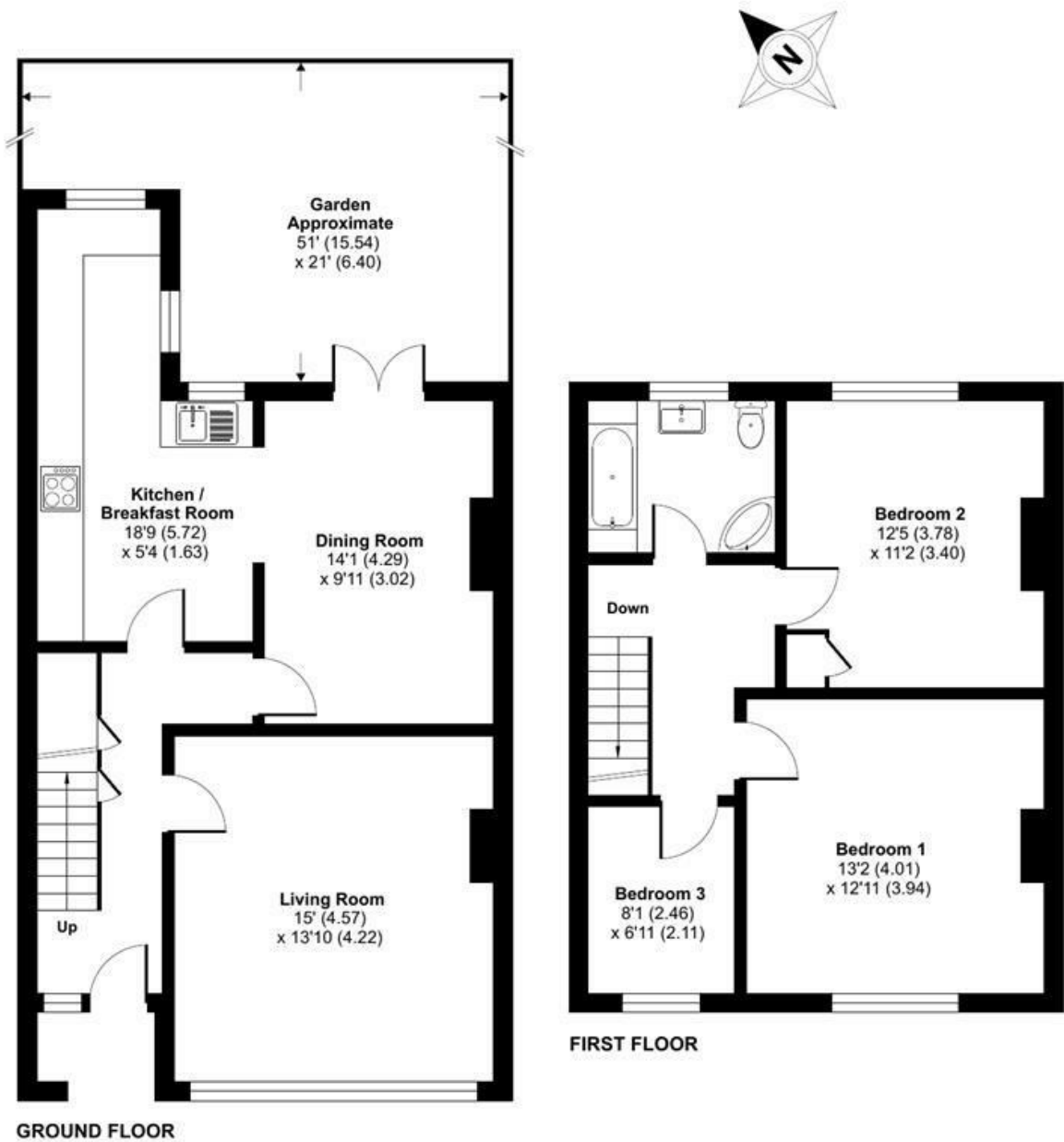
An excellent, spacious three bedroom period family home with extensive living accommodation. Located within the highly desirable Long Ditton area, Surbiton mainline station is within easy reach with highly regarded local schools a short walk away. The many benefits include a large sitting room with a bay window and an exposed brick working fireplace. To the rear an extensive fitted kitchen opening to a good size dining room again with a fireplace and French doors opening to the garden. There is a welcoming entrance hallway with stairs leading to the first floor. On the first floor two very generous size double bedrooms and a good size third bedroom. Plus a modern bathroom suite including a separate shower. Gas central heating. To the rear a secluded garden with a patio seating area and pedestrian access. Council tax band E.

Guide Price £775,000 Freehold

EPC Rating: D

Ditton Hill Road, Long Ditton, Surbiton, KT6

Approximate Area = 1111 sq ft / 103 sq m
For identification only - Not to scale



Floor plan produced in accordance with RICS Property Measurement Standards incorporating International Property Measurement Standards (IPMS2 Residential). © nichecom 2022. Produced for Matthew James. REF: 906832

We aim to make our property details a reliable guide. However they are not guaranteed and do not form part of a contract. Information in relation to lease length, service charge and ground rent has been provided by the vendor, they are likely to be subject to reviews and increases in the future and will need to be verified by your legal representative. Please note that appliances and heating systems have not been tested and therefore no warranty can be given as to their good working order. Carpets, curtains, gas fires, electrical goods/fitings and other fixtures, unless expressly mentioned, are not included in the sale of this property. If there are any important matters which are likely to affect your decision to buy, please contact our office.

